



RENAULT NISSAN MITSUBISHI

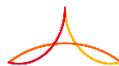
Evolutions of Automotive EE&SW technology

ERTS2020- Renault keynote

A. Corjon - EE&S Engineering Alliance Global VP

Jan. 2020





Connectivity, autonomous car, The world is moving

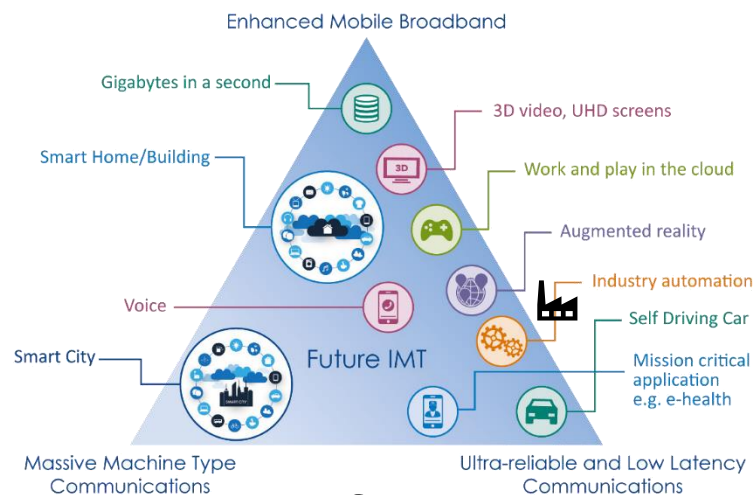
V2X



CONNECTIVITY AND SERVICES

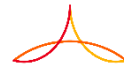


AUTONOMOUS DRIVING

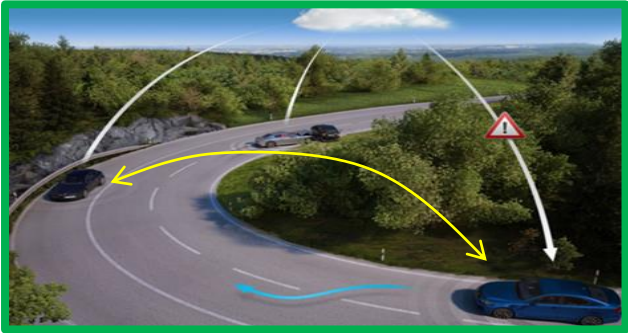


5G

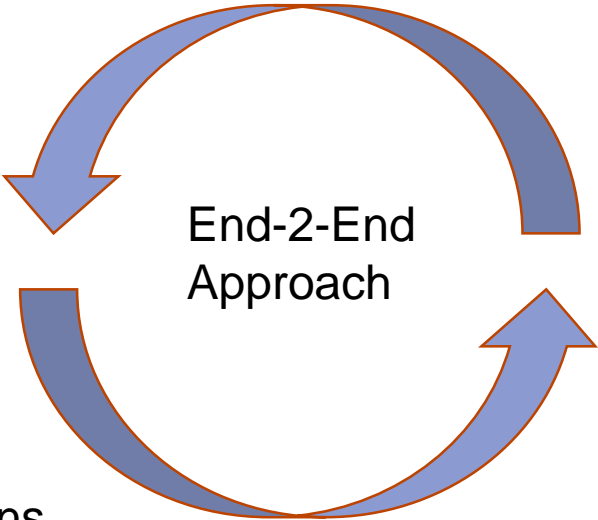
3 Connected Vehicles



C-ITS, Enablers for Connected ADAS/AD & Ecodriving (V2X, eHorizon, 5G, ...)
Connected Vehicle Technologies



Digital Connected Cockpit
Intelligent (AI enabled) functions
Augmented & Virtual Reality

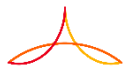


Connected services roadmap
Scalable access to vehicle data
Legal compliance

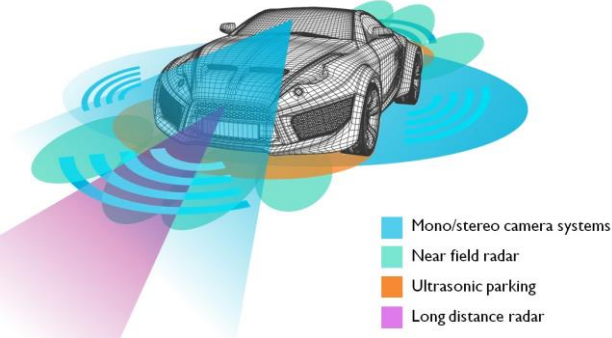


Service Oriented Functional Architecture
& Methodologies

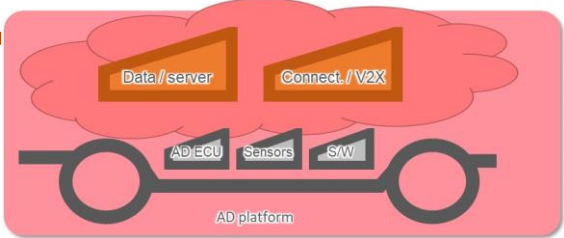




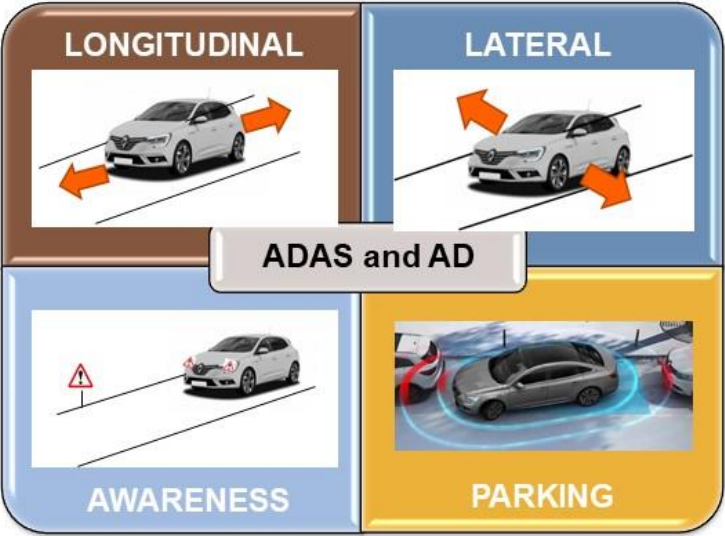
AD Scalable through platform approach



- Mono/stereo camera systems
- Near field radar
- Ultrasonic parking
- Long distance radar



- ✓ 2016
- ✓ 2018
- 2020
- 2022
- 2024



ADAS GSR Phase 2
AD L3 UN WP29

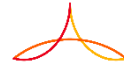


Safety

Benchmark



Regions



Artificial Intelligence Technologies

Knowledge Representation & Reasoning

- E.g. Product Configuration & Variant Management

Data Science

- E.g. Usage-based Maintenance

Deep Learning for Autonomous & CC

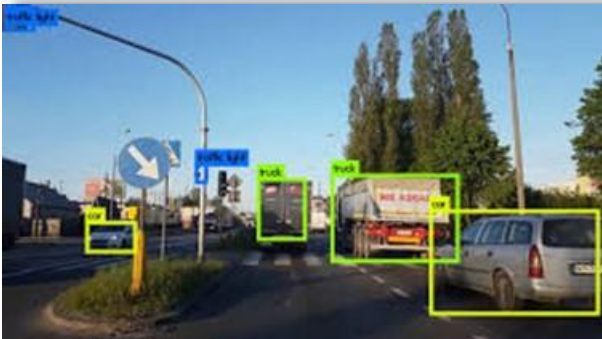
- E.g. Robustness and validation of AI in critical systems (ANITI – Toulouse ; Grand Défi Certification de l'IA)
- E.g. On-board Personal Assistant

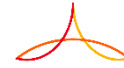
Combinatorial Optimization

- E.g. Production planning & scheduling

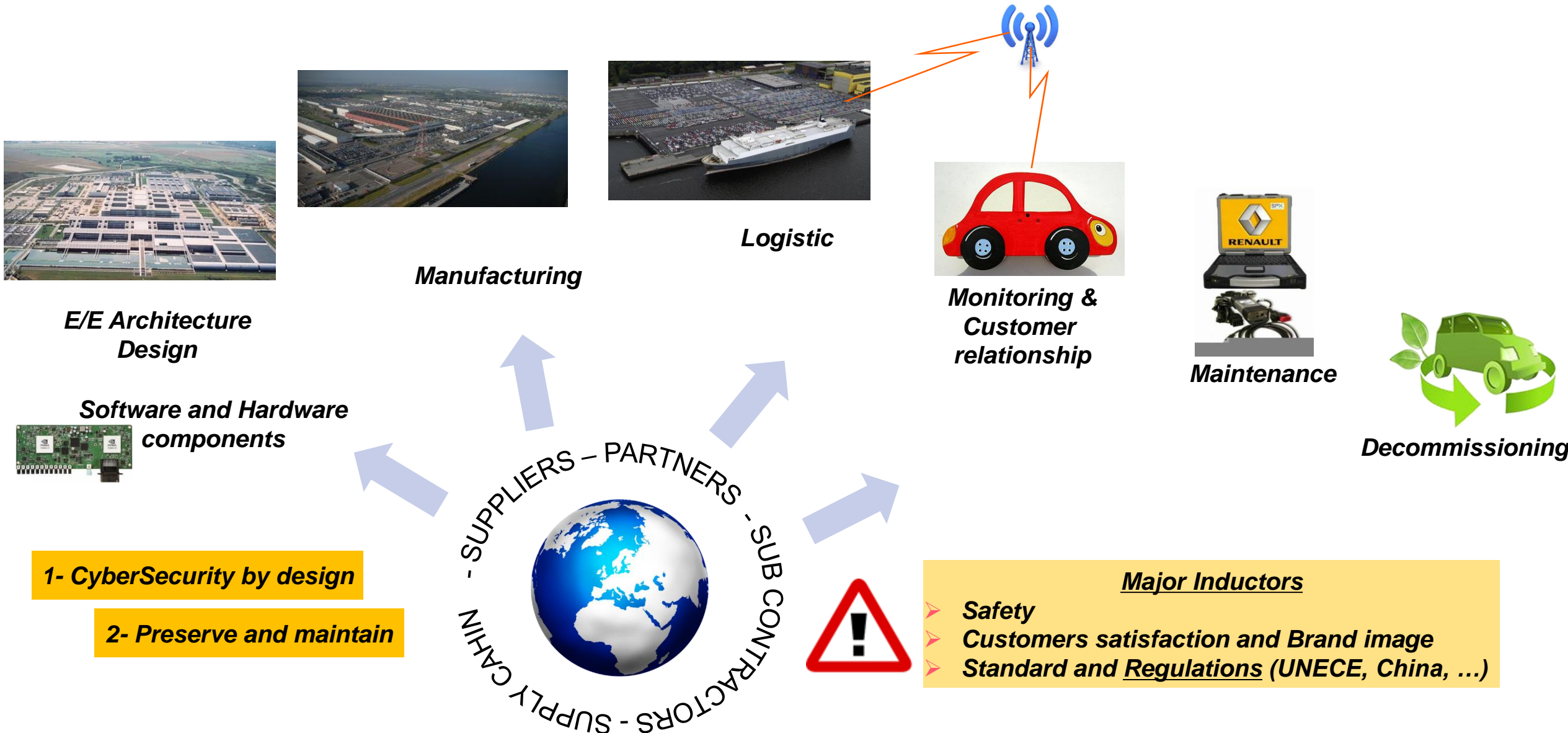
AI for Autonomous Systems

- E.g. Integrity of perception & localisation (joint Lab CNRS/UTC/Renault SIVALAB)

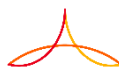
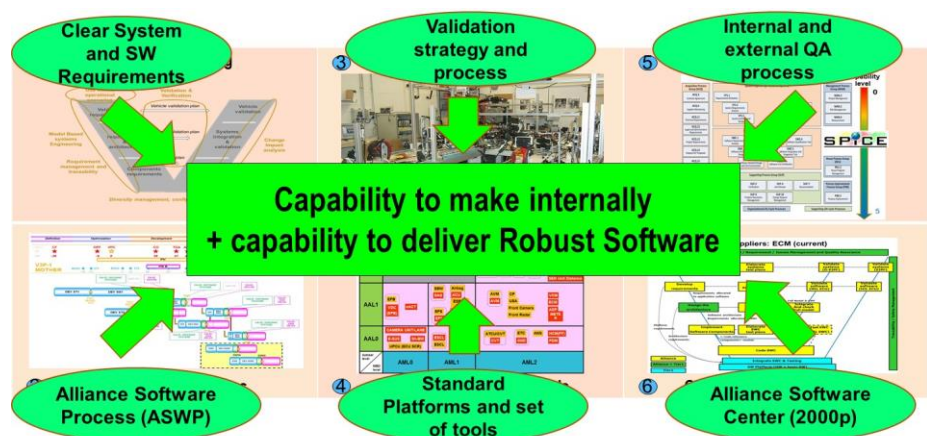




Cybersecurity: a cross company matter

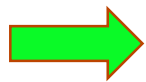


Software Strategy



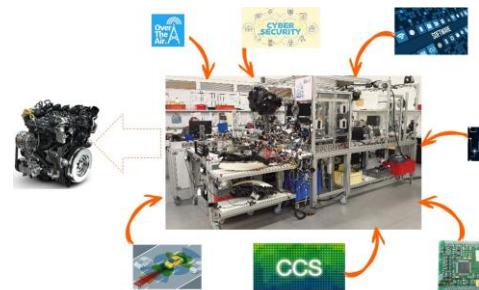
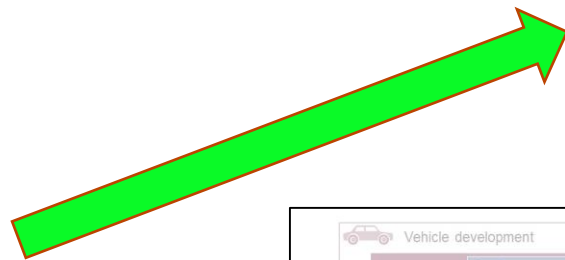
Take benefits of new Alliance Software Center organization and SW Robustness Plan deliverables:

- ☐ Standardization
- ☐ Make internally some applicative SW
- ☐ Continuous Integration / Continuous Testing
- ☐ Quality improvement (Alliance SW Process, FOTA, ...)

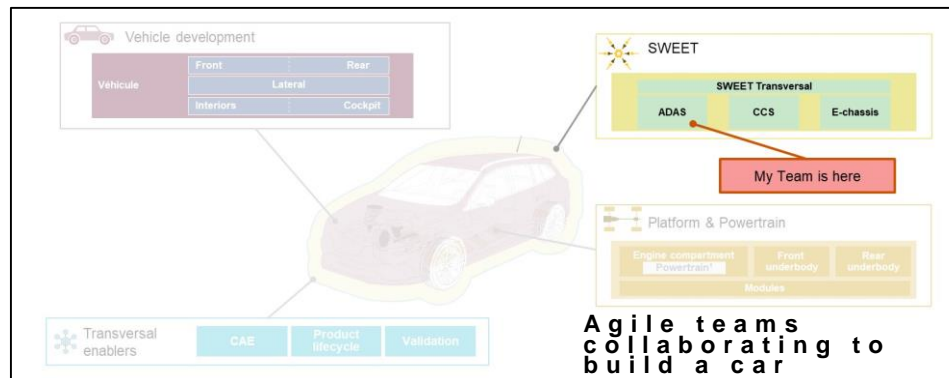


New topics to enhance Embedded Software development and increase performance:

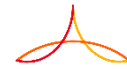
- ☐ SWEET (SW and EE Technology)
- ☐ Agile
- ☐ New Software Architecture



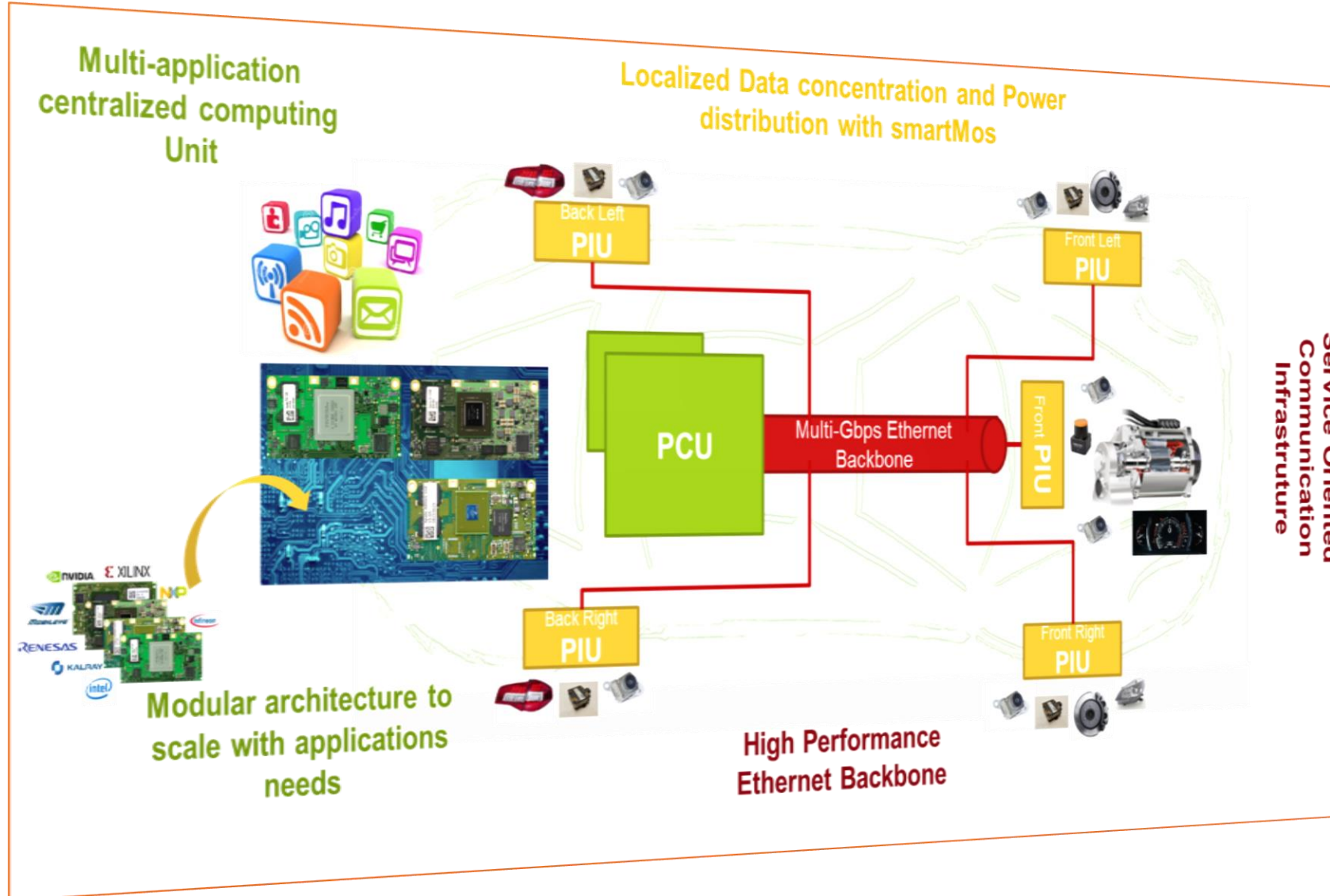
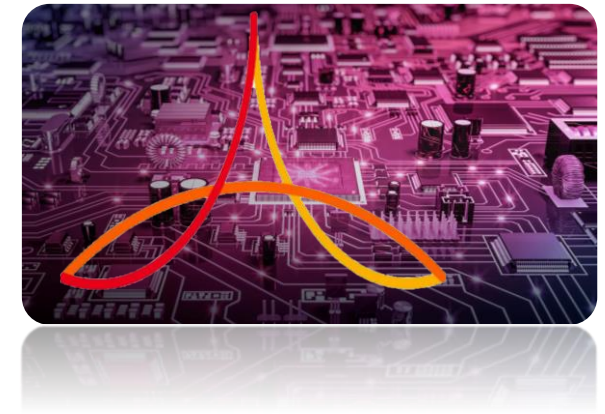
SWEET IS A COMPLETE PRODUCT



FACE Project

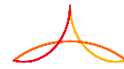


Future architecture for Automotive Computing Environment

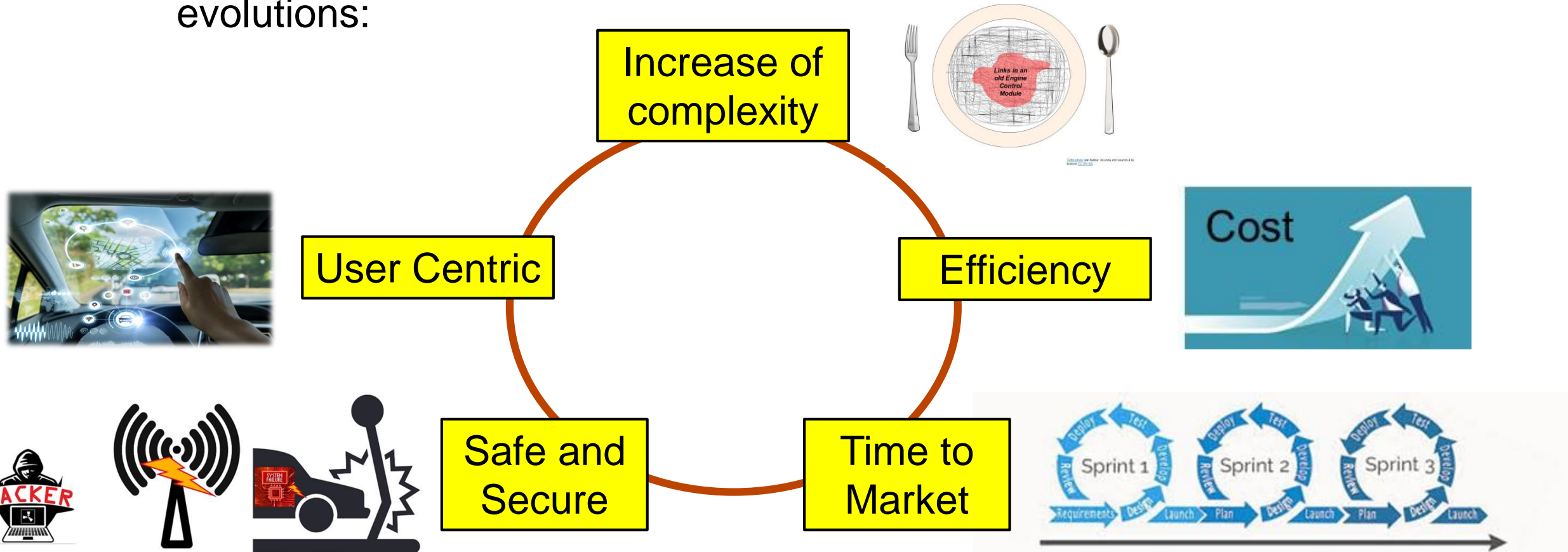


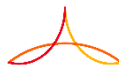
- PCU: Power Computing Unit
- PIU: Physical Interface Unit

Conclusion (1/2)



- Digitalization of the industry continues at high speed
- Both Automotive and Aeronautics industries are confronted to the same evolutions:





Conclusion (2/2)



Have a nice congress